



Top Factors to Consider for Your Outdoor Umbrella Purchase

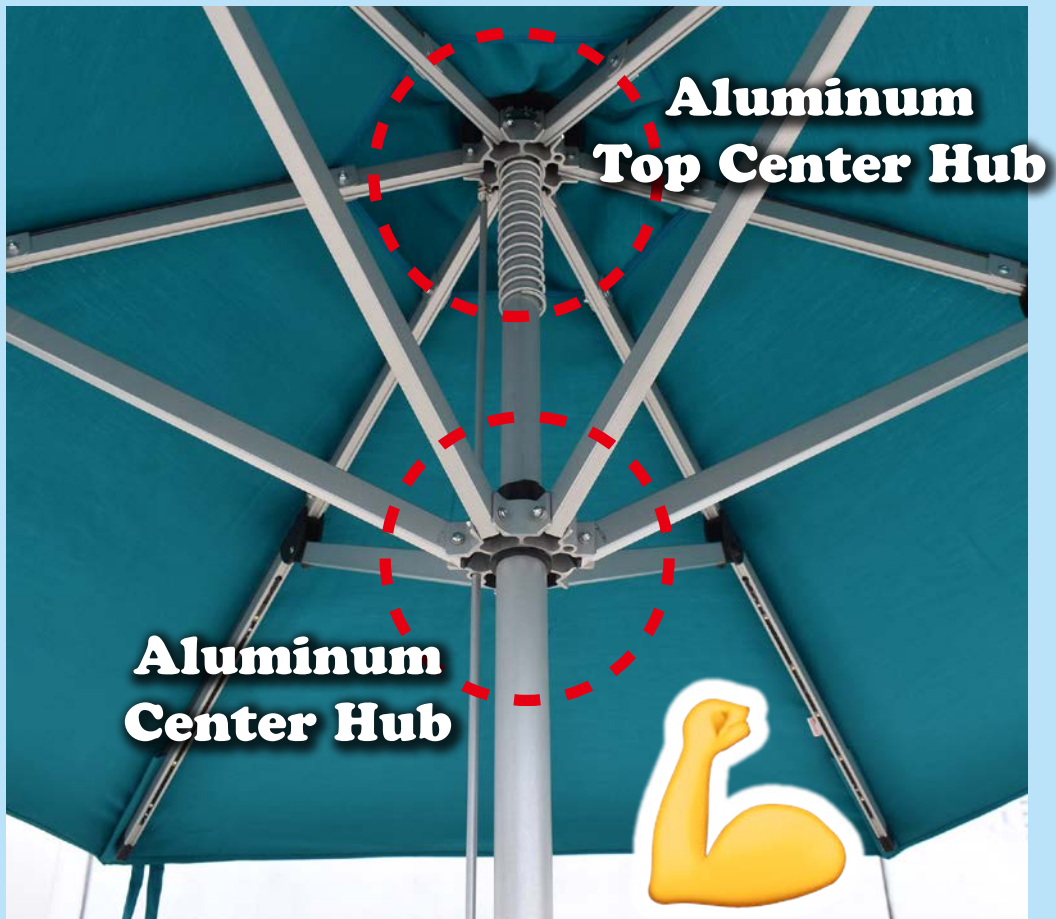
When searching for outdoor umbrellas in the market, there are several key factors to consider, and that's why SUNRISE SELF-OPEN FREE-SITTING UMBRELLA is your best choice:



1. Durability and Reliability :

Constructed with high-strength aluminum alloy and steel materials, SELF-OPEN UMBRELLA uses a cleverly designed frame for extra toughness, making it more durable. This innovation smartly solves the problem of traditional sun umbrellas easily breaking during use.

SUNRISE SELF-OPEN UMBRELLA



COMPARISON

TRADITIONAL UMBRELLA



1. Durability and Reliability :

it's exceptionally sturdy and built to last.

SUNRISE SELF-OPEN UMBRELLA



Reinforced Metal Rib Joint



One Step Close Metal Handle



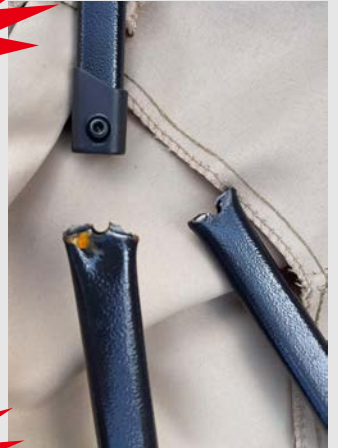
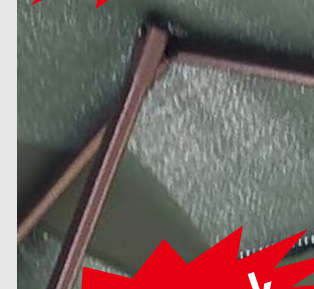
COMPARISON

TRADITIONAL UMBRELLA

D Rib Joint



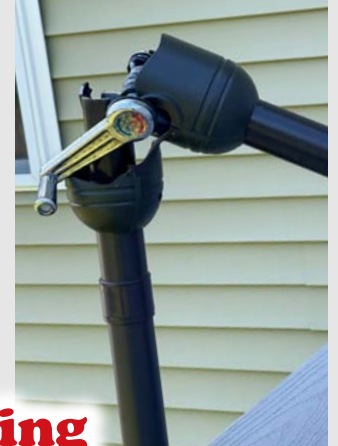
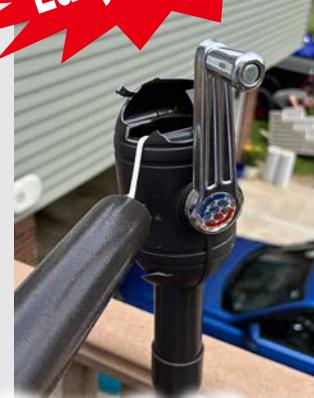
Easy To Break



Easy To Break



E Plastic Crank Housing



2. Innovative Opening and Closing Design :

Using an innovative lever mechanism, it's incredibly easy, quick, and safe to operate. It opens in just a second and closes with a single step.

SUNRISE SELF-OPEN UMBRELLA



COMPARISON

OPEN

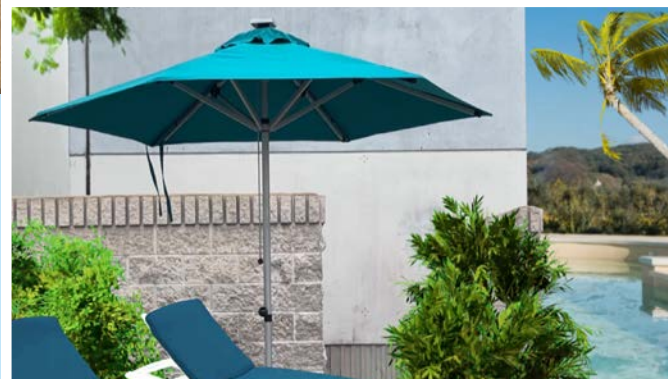
TRADITIONAL UMBRELLA



3. Outstanding Wind Resistance :

We've reinforced critical components of the umbrella frame to withstand strong winds, ensuring it's less susceptible to wind damage.

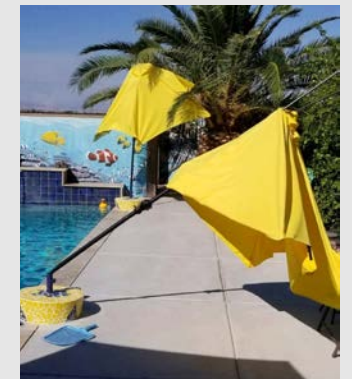
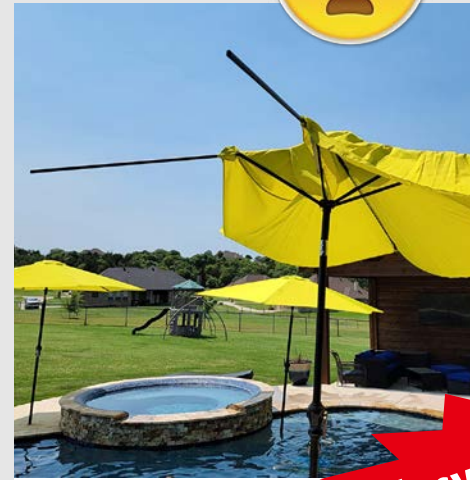
SUNRISE SELF-OPEN UMBRELLA



COMPARISON



TRADITIONAL UMBRELLA



4. Special Structural Design :

Introducing the SELF-OPEN FUNCTION, a gentle pull is all it takes for the umbrella to open automatically. Moreover, a simple push closes it instantly, all without coming into contact with tables, chairs, or people beneath it – we call it the "Free-sitting function."

SUNRISE SELF-OPEN UMBRELLA



**Push Up
(One Step)**



COMPARISON

CLOSE

TRADITIONAL UMBRELLA



5. Factory Direct Sales and Competitive Pricing :

This guarantees that your investment provides excellent value for money.



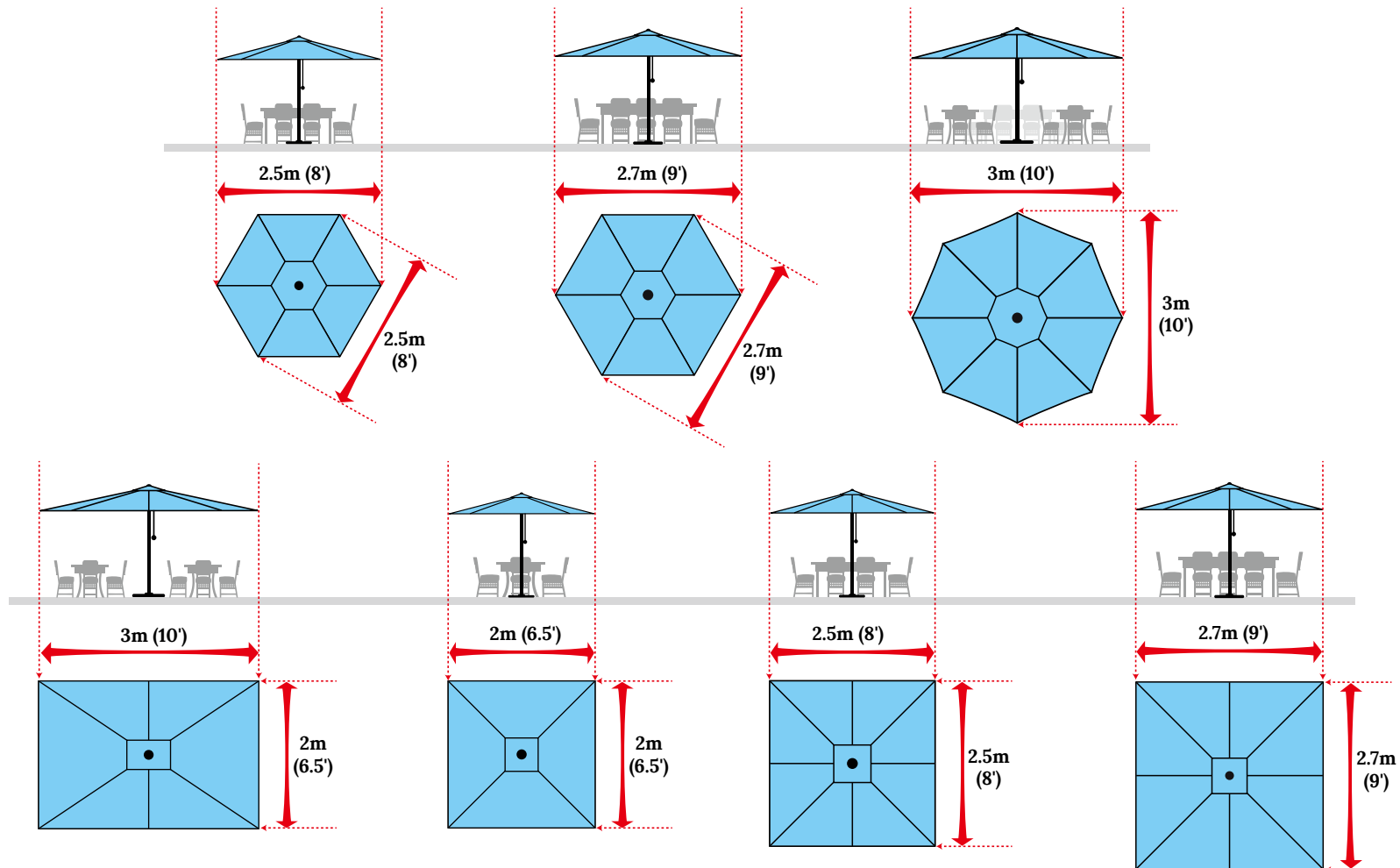
6. Extended 3-Year Warranty :

We offer a generous 3-year warranty to ensure your peace of mind.



7. Versatile Size and Shape Options:

We understand that different occasions call for different shading solutions. That's why our SUNRISE SELF-OPEN UMBRELLA comes in various sizes and shapes. Whether you need a square, rectangular, or round umbrella, and regardless of the size you choose, our range of options ensures a perfect fit for various settings and occasions.



Furthermore, we offer customization options to meet your specific needs. Whether for outdoor gatherings, vacation spots, or al fresco dining, SUNRISE SELF-OPEN UMBRELLA provides the ideal shading solution. Enjoy the comfortable outdoor sunshine with confidence.





Sunrise Outdoor Ltd.

For further information, please visit our website at
www.sunrise-outdoor.com

